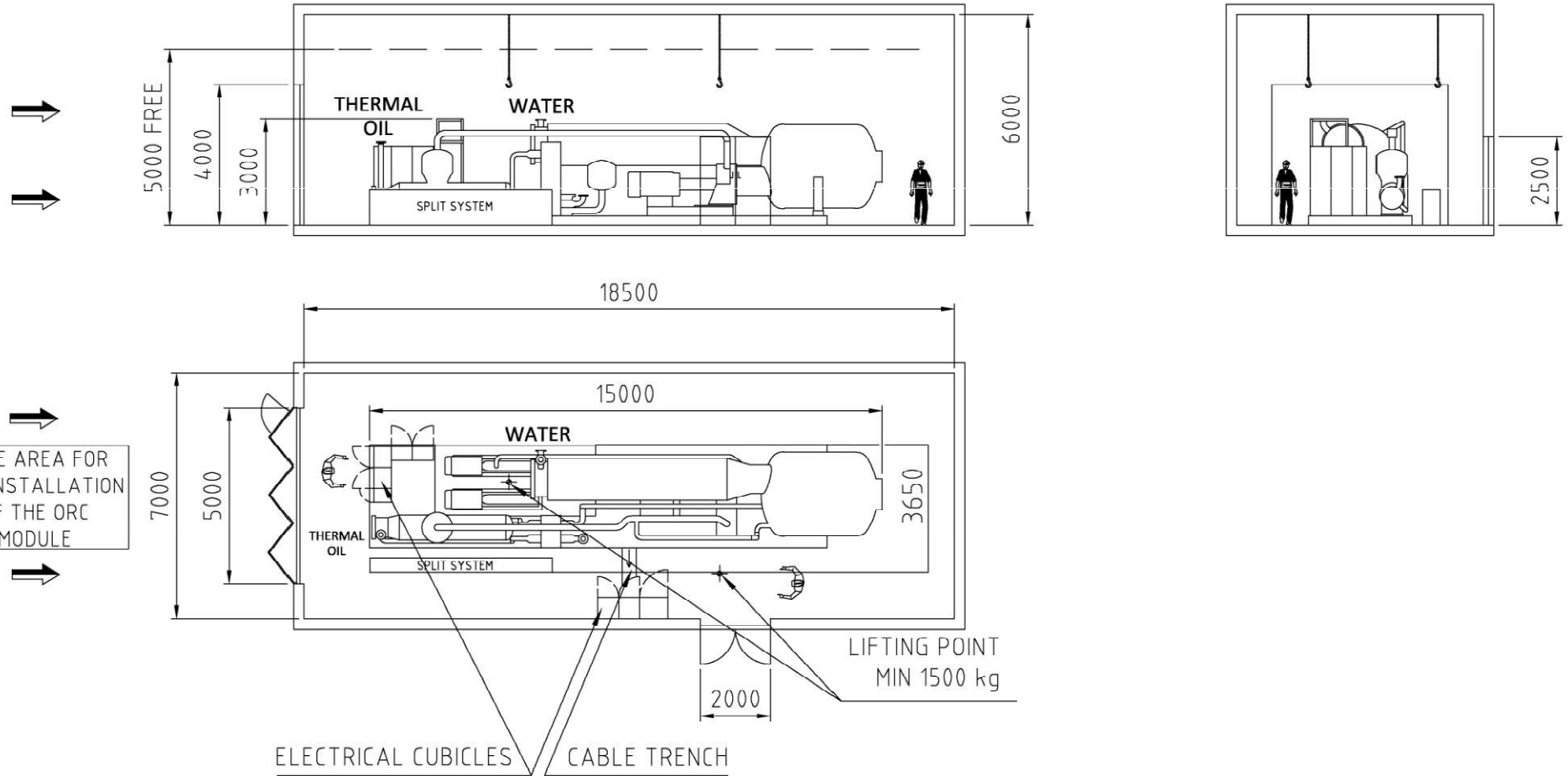


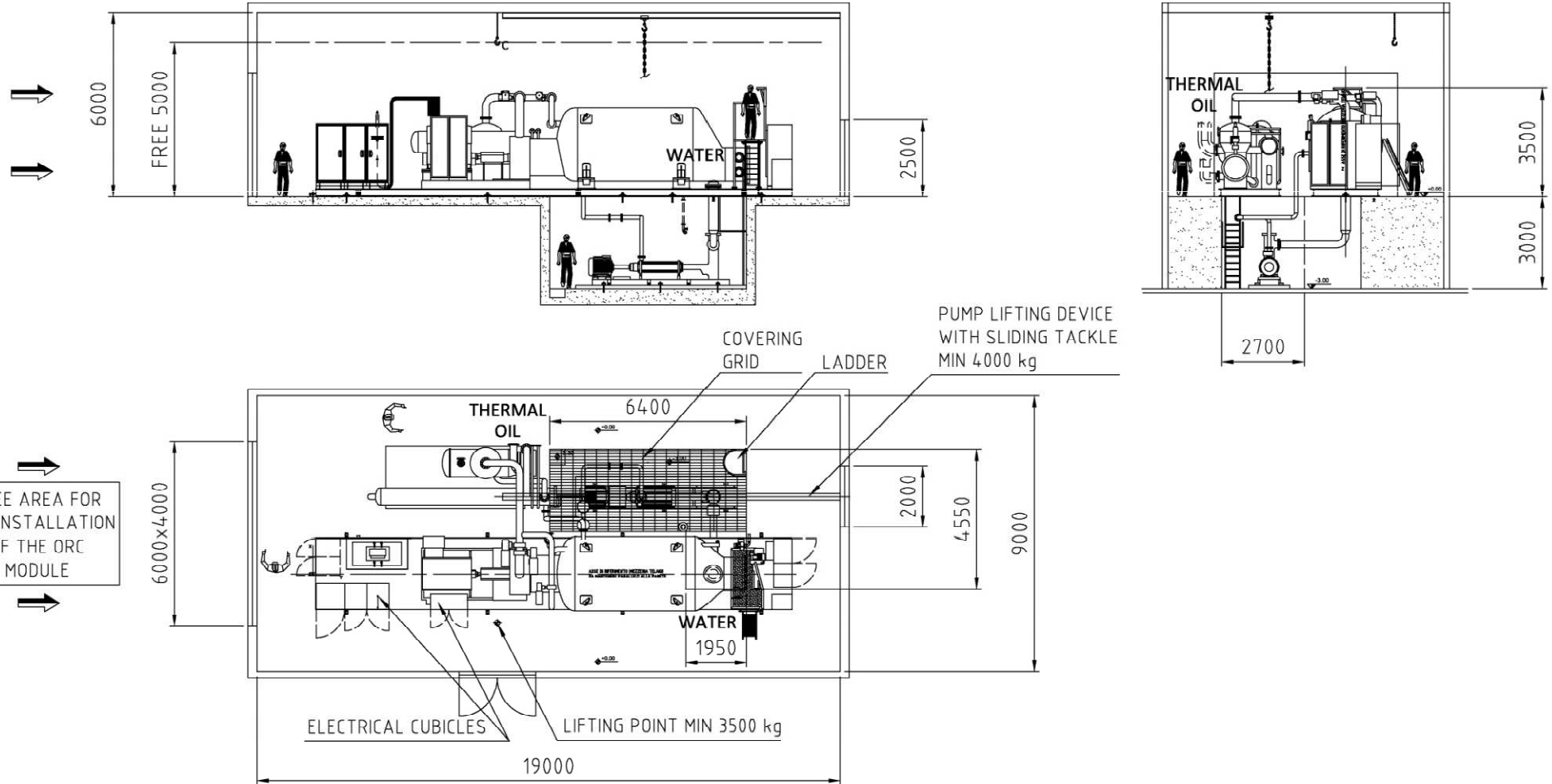
Turboden 6/7-CHP/HR ORC room example



Copyright © – Turboden S.r.l. All rights reserved

We recommend to install the ORC module in a dedicated room, separated from the boiler room. This is meant to assure a proper ventilation of the ORC room, to protect it from powder or fire events which may be generated from items not supplied by Turboden. All dimensions indicated on the drawing must be considered as minimal space requirements for a standard installation. Spaces for water and thermal oil circulating systems, power connections, other customer side equipments and optional devices are not considered.

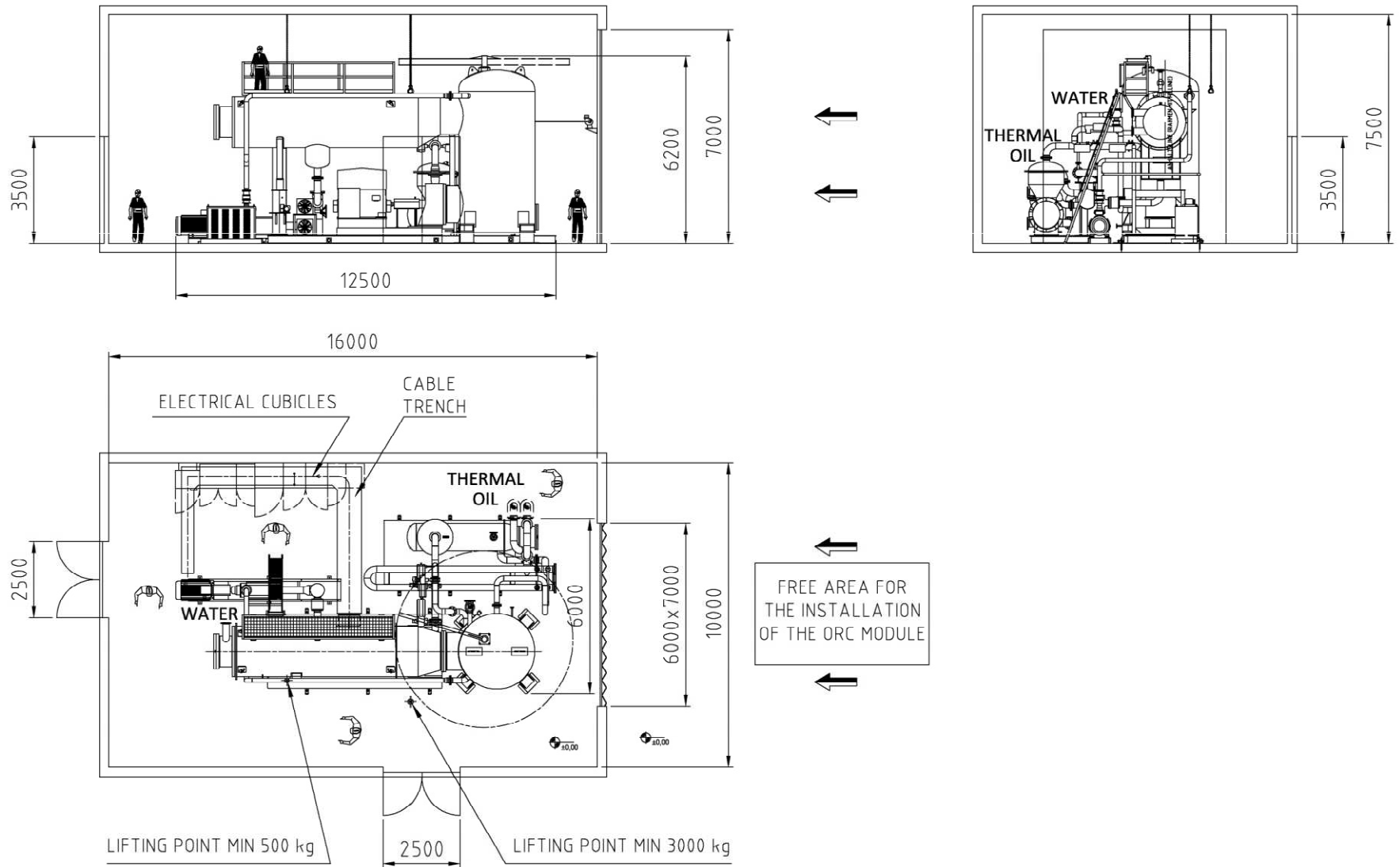
Turboden 10-CHP/HR ORC room example



Copyright © – Turboden S.r.l. All rights reserved

We recommend to install the ORC module in a dedicated room, separated from the boiler room. This is meant to assure a proper ventilation of the ORC room, to protect it from powder or fire events which may be generated from items not supplied by Turboden. All dimensions indicated on the drawing must be considered as minimal space requirements for a standard installation. Spaces for water and thermal oil circulating systems, power connections, other customer side equipments and optional devices are not considered.

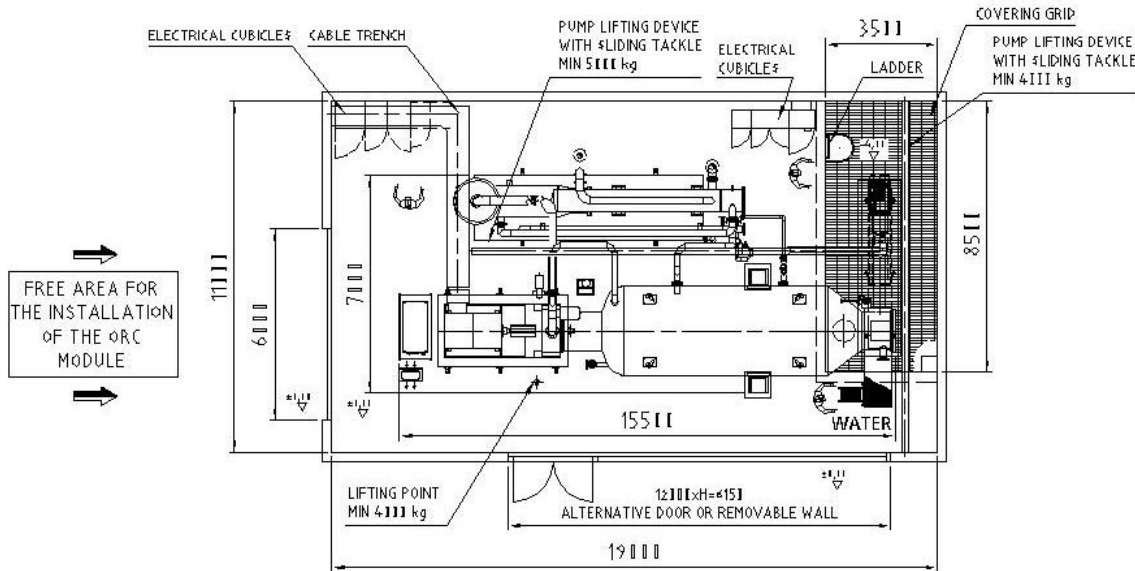
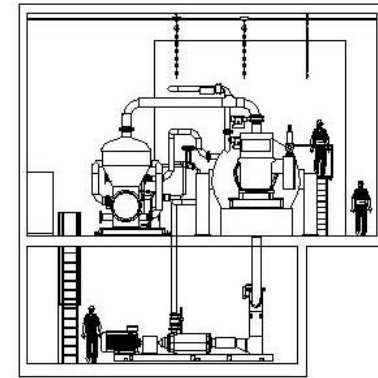
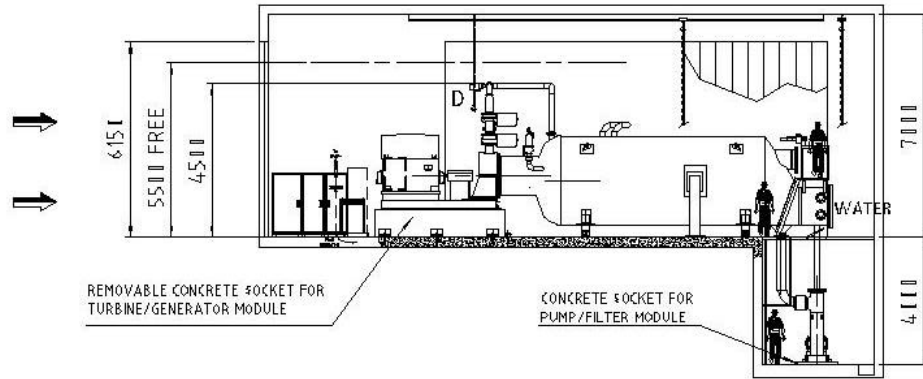
Turboden 14-CHP/HR ORC room example



Copyright © – Turboden S.r.l. All rights reserved

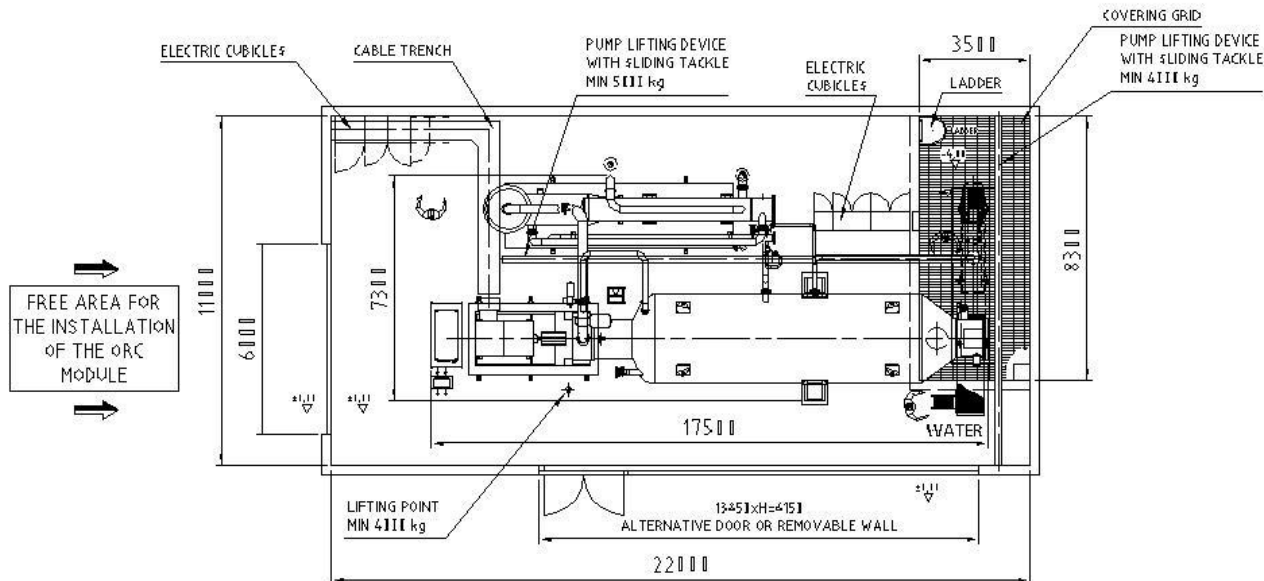
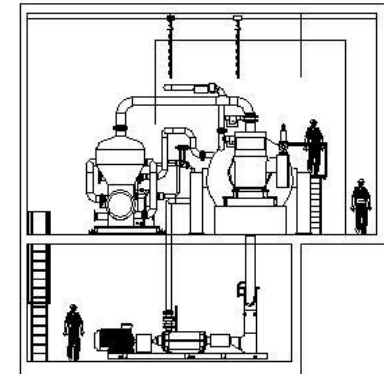
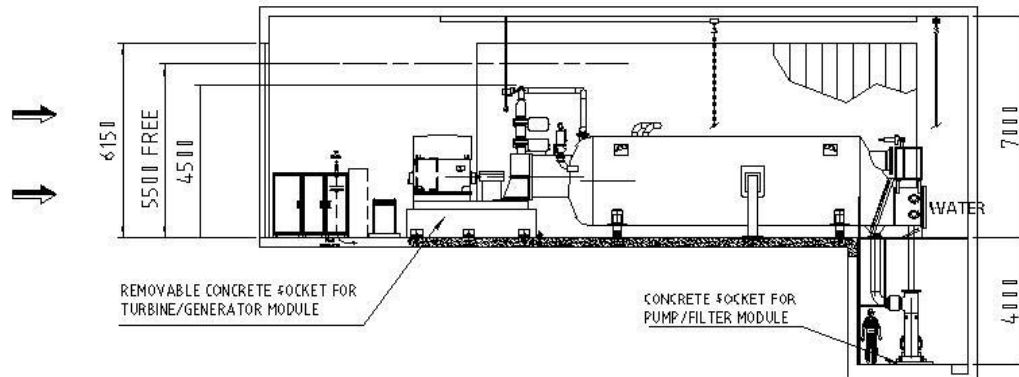
We recommend to install the ORC module in a dedicated room, separated from the boiler room. This is meant to assure a proper ventilation of the ORC room, to protect it from powder or fire events which may be generated from items not supplied by Turboden. All dimensions indicated on the drawing must be considered as minimal space requirements for a standard installation. Spaces for water and thermal oil circulating systems, power connections, other customer side equipments and optional devices are not considered.

Turboden 18-CHP/HR ORC room example



We recommend to install the ORC module in a dedicated room, separated from the boiler room. This is meant to assure a proper ventilation of the ORC room, to protect it from powder or fire events which may be generated from items not supplied by Turboden. All dimensions indicated on the drawing must be considered as minimal space requirements for a standard installation. Spaces for water and thermal oil circulating systems, power connections, other customer side equipments and optional devices are not considered.

Turboden 22-CHP/HR ORC room example



We recommend to install the ORC module in a dedicated room, separated from the boiler room. This is meant to assure a proper ventilation of the ORC room, to protect it from powder or fire events which may be generated from items not supplied by Turboden. All dimensions indicated on the drawing must be considered as minimal space requirements for a standard installation. Spaces for water and thermal oil circulating systems, power connections, other customer side equipments and optional devices are not considered.